

GDF

船用柴油机

Marine Diesel Engines



GDF®

广州柴油机厂股份有限公司
GUANGZHOU DIESEL ENGINE FACTORY CO.,LTD

远见卓识 开启未来

Foresighted and judicious judgement, driving the future

Profile Company 公司简介



Guangzhou Diesel Engine Factory Co.,Ltd (Formerly known as Guangzhou Diesel Engine Factory) known as Hip Tung Wo Machinery Factory established in 1911, who made the first diesel engine in China in 1915. Now, the factory has become the largest factory manufacturing diesel engines in the South China with the capacity of mass production of diesel engines.

The company manufactures mainly series 230, 320, G32 and KU30A medium-speed with output from 660kW~6000kW. The new product 230SG series nature gas engine is designed by Norwegian Marine Technology Research Institute cooperated with our company according to the Energy Saving and Emission Reduction Principle and the market demand. This diesel engine has many features such as stable operation and high reliability, sufficient margin power, low fuel consumption, low emission, low running cost and easy to maintain thus warmly received by users.

The company has obtained the CCS, BV, GL, NK, LR and DNV Factory Authorization and Certificates and has established a strict quality management system ISO9001.

The exhaust emission of the medium-speed diesel engines manufactured by Guangzhou Diesel Engine Factory Co.,Ltd is in conformity with the NOx emission standard issued by IMO-Tier II.

The medium-speed diesel engines from Guangzhou Diesel Engine

Factory Co.,Ltd with the power taken out from the both ends of the crankshaft are widely used as the marine main or auxiliary engine of Ro-Ro vehicle ships and naval ships and can be equipped with remote-controlled device, thrusting bearings and all kinds of coupling and gearboxes according to the requirements from users. Furthermore, we can supply steering, central controlling, monitoring and engine-side operating consoles with a good performance, a complete alarms, easy operation and capable of changeover each other.

Our company also manufactures generating sets with the output of 500kW to 4180kW. These generating sets are equipped with the diesel engine from the factory as their motive machines and the first-rated generator and electrical device with the many features such as low fuel oil consumption, low nose level, easy parallel to power grids and capable of long term operation with a good performance, and the generating sets equipped with the emergency device can be automated for supply of power thus are ideal stand-by or emergency power equipment for power stations and plants etc.

All medium-speed diesel engines of 320, 230, G32 and KU30A series and generating sets from our factory can be operated on heavy fuel oil of 180cSt/50°C, 380cSt/50°C or of 1500 sec. Red.No.1/100°F, 3500 sec. Red.No.1/100°F.

历史悠久 实力雄厚

广州柴油机厂股份有限公司（原广州柴油机厂）是中国柴油机制造业中历史最悠久的企业之一，她的前身是协同和机器厂，始建于1911年，1915年她成功地制造出中国第一台柴油机。今天的广州柴油机厂股份有限公司已经发展成为中国华南地区最大的柴油机专业生产企业，具有批量生产柴油机的能力。

产品齐全 品质卓越

广州柴油机厂股份有限公司主要生产320、230、G32、KU30A等四种系列的中速柴油机，产品功率范660kW~6000kW。230SG系列天然气发动机是根据目前国际市场需要，按照节能减排的设计理念，与挪威船舶技术研究所合作研发的新产品。柴油机具有运行稳定性和可靠性高，储备功率充足，低油耗，低排放，维护方便，运行成本低的特点，深受广大用户欢迎。

广州柴油机厂股份有限公司建立了严格的质量管理体系，获得了英国皇家认证协会（UKAS）颁发的质量管理体系ISO9001认可证书，同时获得了CCS、BV、GL、NK、LR、DNV等多国船级社的工厂认可和产品认可证书。

广州柴油机厂股份有限公司生产的中速柴油机完全符合IMO-Tier II 规定的排放标准。

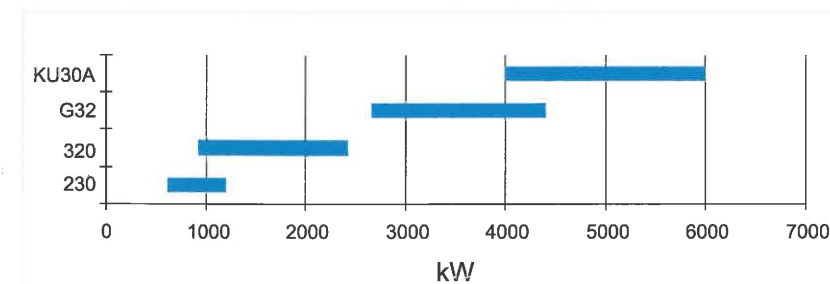
我司生产的各种中速柴油机广泛应用于各类船舶主、辅机，可配套遥控装置、推力轴承、各类联轴节及齿轮箱；可两端输出功率，带动各类工程机械；还可提供驾控台、集控台或监控台，并实现驾控、集控、机旁操作的三者相互转换，具有性能良好、报警功能齐全、操作方便等优点，适合各种客滚船、油船、散货船、集装箱船、拖轮、渔轮、疏浚工程船及海军舰船作主机或辅机动力之用。

专业创造 品质超群

广州柴油机厂股份有限公司生产500kW~4180kW的各种规格柴油发电机组，是采用我司生产的柴油机配套优质的发电机和电控设备而组成，具有噪声低、油耗省，并网容易和可长时间运转的良好性能；带有应急装置的柴油发电机组还可实现供电的自动化，是用户理想的自备电站和发电厂可靠的保安备用电源。

我司生产320、230、G32、KU30A系列的各种规格船用主机及船、陆用中速柴油发电机组，可燃用运动粘度180厘沲/50℃、380厘沲/50℃或雷氏1号粘度1500秒/100°F、3500秒/100°F的重油。

功率范围 Power Range



KU30A	4000kW~6000kW
G32	2665kW~4400kW
320	971kW~2426kW
230	660kW~1324kW

创新发展 永不停步

Creation and development, keeping advancing

Show
Company 实力展示

- 企业通过ISO9001质量管理体系认证
- The certificate of conformity of quality management system certification gained by the factory



- 先进的设备——数控曲轴磨床
- Advanced Equipment-Numerical Control Crankshaft Grinding Machine



- 先进的设备——五面体加工中心
- Advanced Equipment-Machining Centre of Pentahedron



- 先进的设备——定梁龙门加工中心
- Advanced Equipment-Batching Gantry Machining Centre

广州柴油机厂股份有限公司（原广州柴油机厂）是一家技术密集型企业，产品从设计、制造、测试到投放市场，是一项复杂的系统工程。

设计方面，我们积极与国内外著名的科研所合作，应用计算机PLM、CAD软件进行设计、研制新产品，持续加强新产品质量改进，使我们的新产品拥有较高的技术含量。

制造方面，我们拥有专业的生产线和先进的设备，从铸造、机加工到总装配，我们都严格执行工艺纪律，以工艺提升制造水平，打造企业竞争力。

测试方面，我们精密的测试仪器，运用先进的测试手段，保证产品的技术精度，突显我们的品牌优势。

Guangzhou Diesel Engine Factory Co.,Ltd (Formerly known as Guangzhou Diesel Engine Factory) is concentrated technology enterprise. The manufacturing product is a complex system engineering: design, manufacture, measuring, test and marketing.

In design, We have cooperated with famous institution home and abroad to design the diesel engine by means of PLM and CAD software, and have been improving the quality of products continuously to make our product have high technical content. In manufacture, We have special production line and advanced devices to make the enterprise own competitive power including casting, machine and assembly production line. In measuring, We use precise testing instrument by means of advanced testing methods to guarantee the accuracy of product.



- 质量管理体系认证证书
- Certificate of Conformity of Quality Management System Certification
- 认证注册证书
- Certificate of Registration



- BV对工厂的认可
- Recognition for BV Model II Survey Scheme
- BV型式认可证书
- BV Type Approval Certificate
- GL型式认可证书
- GL Type Approval Certificate

230型船用柴油机
230 MARINE DIESEL ENGINES



- 采用我司2台8230ZC船用柴油机作主动力力的五星级新世纪游轮“世纪钻石”号
- The "CENTURY DIAMOND" New Century Cruises Equipped With Our 2 Sets of 8230ZC Marine Diesel Engine As Its Propelling Unit.

230系列柴油机性能特点
BRIEF INTRODUCTION TO SERIES 230 ENGINES
CHARACTERISTICS

6230型船用柴油机是我司与中国船舶重工集团公司711研究所在总结我国中速船用柴油机成功经验的基础上，遵照引进、消化、吸收、创新的技术引进原则联合开发的新型中速柴油机，该机各项性能指标均达到九十年代国际同类产品先进水平，并具有外形简洁、结构合理、性能稳定、工作可靠、操作维护方便、经济性好等优点。

230系列柴油机为四冲程、直列式、直接喷射、废气涡轮增压、中间空气冷却，不可逆转的柴油机。有6缸、8缸，功率660-1324kW等规格。可燃用运动粘度380厘沱/50℃或雷氏1号粘度3500秒/100°F的重油。

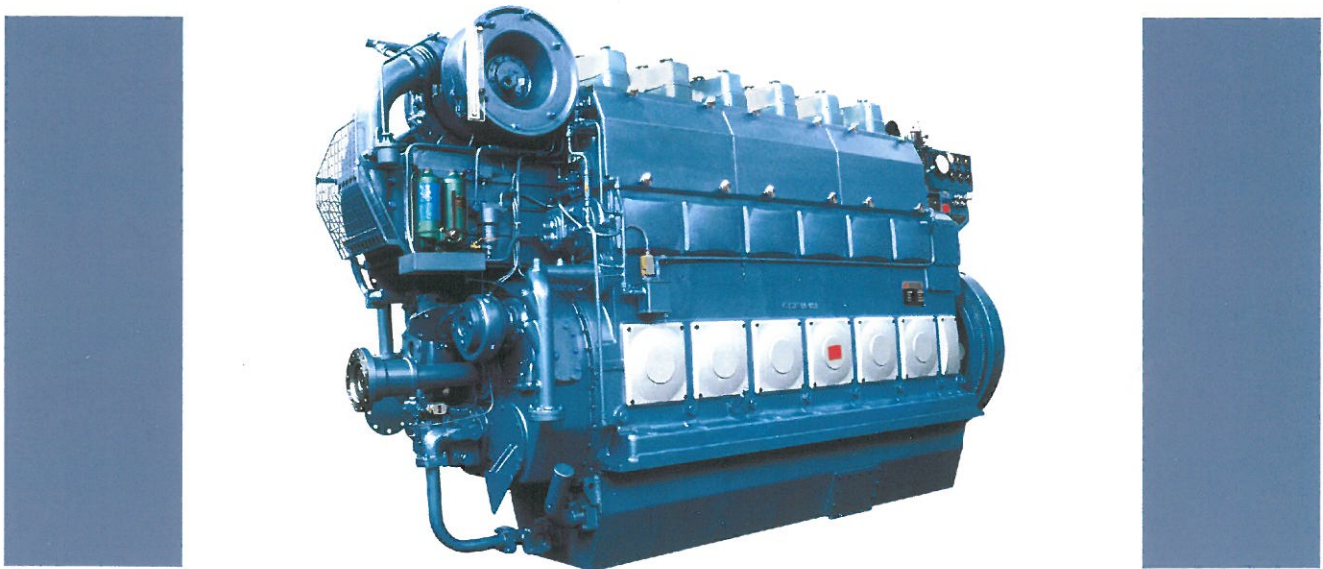
The Series 230 engine is a turbocharged, irreversible, single action, four stroke, in-line, direct injection, and medium speed diesel one with a charging cooler. The engine with 6 or 8 cylinders and with the output of 660 to 1324kW is a new product developed by our company in cooperation with the Shanghai Marine Diesel Engine Institute on the base of the successful experience in diesel engine design and use, on the principle of assimilation of advanced technologies and improvement upon of them, and by adoption of the advanced structure of the other engines, with many features such as a simple outline, reasonable construction, reliable performance, easy operation and maintenance and capable of being operated on heavy fuel oil of 380cSt/50℃ or of 3500 sec.Red.No.1/100°F.

适宜选用230船用柴油机作主机船舶类型
230 engine used as the main engine of following ships

- 挖泥船
- 工程船
- 化学品船
- 散货船
- Bulk carriers
- 内河船
- 客滚船
- 油船
- 拖轮
- Tugboats



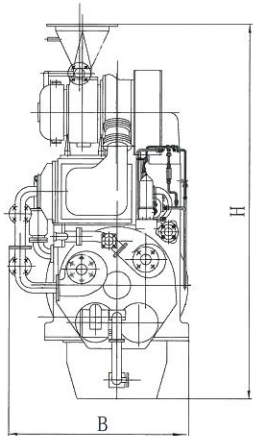
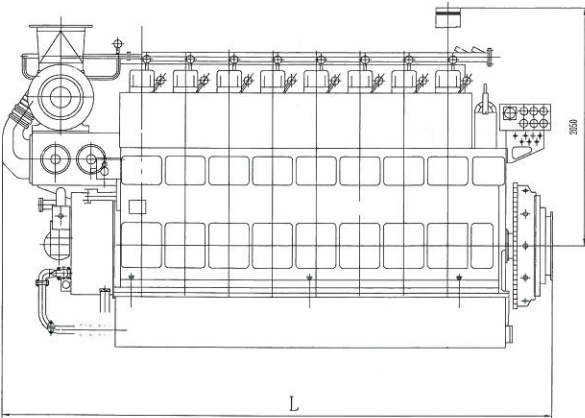
- "海洋石油252"海洋环保工作船 用四台8230ZC型柴油机（四机双可调桨）
- "HAIYANG SHI YOU 252" Ocean Environment Protection Engineering Ship-8230ZC x 4



主要技术参数
The main specifications parameters

项目Item	型号Model	6230ZC-1	6230ZC (730kW)	6230ZC	6230ZC-4	8230ZC	8230ZC-4
气缸数 No. of cylinders		6	6	6	6	8	8
气缸直径 Cylinder bore	mm	230					
活塞行程 Piston stroke	mm	300					
持续功率 MCR	kW/Ps	660/900	730/993	810/1100	960/1300	1100/1500	1324/1800
转速 Speed at MCR	r/min	750	750	750	900	750	900
平均有效压力 Mean effective pressure	MPa	1.41	1.56	1.73	1.712	1.765	1.771
最高燃烧压力 Max.combustion pressure	MPa	13.0	13.0	13.5	14.0	13.5	14.0
活塞平均速度 Mean piston speed	m/s	7.5	7.5	7.5	9.0	7.5	9.0
燃油消耗率 Specific fuel oil consumption g/kW.h		190					
at 85% MCR		192					
at 100% MCR		1.0					
机油消耗率 Specific lube oil consumption g/kW.h		1.0					
主要尺寸 Main Dimensions (L*B*H)	mm	3852x1353.5x2718		3898x1353.5x2792		4638x1353.5x2792	
重量 Weight	kg	11500		11700		14500	

230系列柴油机外形尺寸
230 Series Diesel Engine Overall Dimensions



320 型船用柴油机

320 MARINE DIESEL ENGINES

GDF



- "长能9号" 液化石油气运输船 使用8320ZCd-8 型柴油机做主机
- "CHANGNENG 9" LPG Transport Ship 8320ZCd-8 Diesel Engine

320 型柴油机性能特点

BRIEF INTRODUCTION TO SERIES 320 ENGINES
CHARACTERISTICS

6320型船用柴油机曾获全国科学大会奖，该
机结构紧凑，性能先进，振动性能良好，达到国内
中速机的先进水平，并且有工作可靠，操作维护方
便，经济性好的优点。

直列320系列船用柴油机为四冲程、水冷、直
接喷射、废气涡轮增压、中间空气冷却的柴油机，
有6缸、8缸，功率971-2206kW等多种规格，可燃用
运动粘度 180厘沱 /50℃ 或 雷氏 1号 粘度 1500秒
/100°F的重油。

320系列船用柴油机可根据客户需求配套遥控
装置、各类联轴节、齿轮箱及其它工程机械。

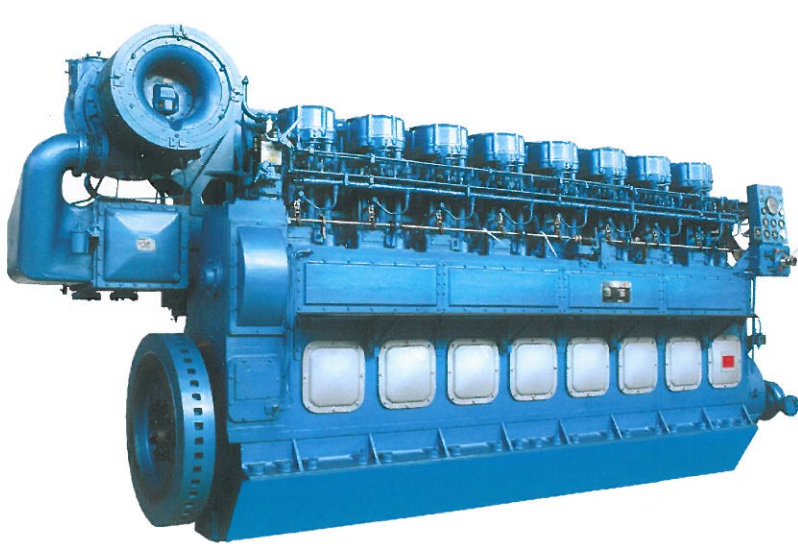
适宜选用320船用柴油机作主机船舶类型

320 engine used as the main engine of following ships

- 客滚船
- 拖轮
- 油船
- 渔轮
- 集装箱船
- 疏浚工程船
- 散货船
- 海军舰船
- Ro-Ro vehicle ships
- Tugboats
- Oil tankers
- Fishing ships
- Container ships
- Dredgers
- Bulk carriers
- Naval ships



- "新宇航3" 挖泥船 使用四台8320ZCd-6型柴油机
- "XIN YU HANG 3" Dredger-8320ZCd-6 × 4 Diesel Engine



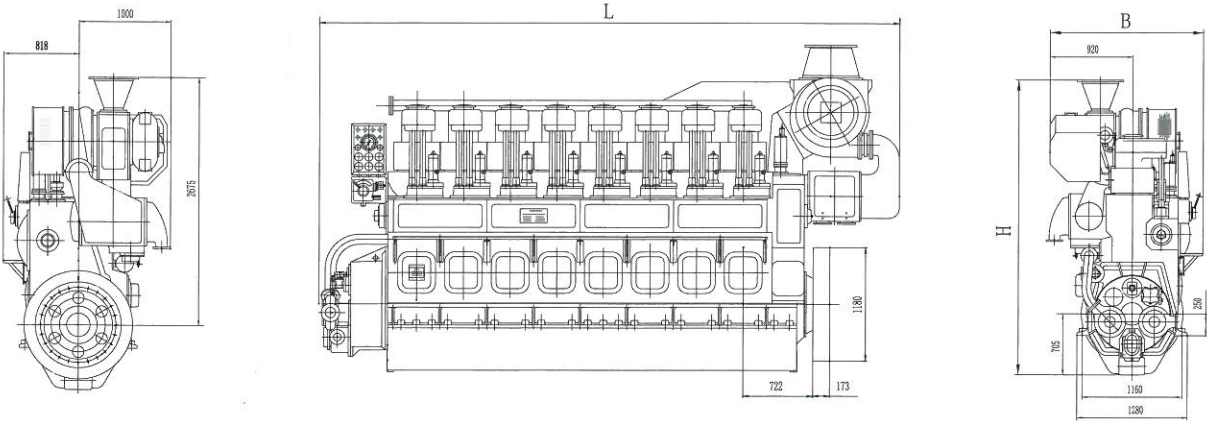
主要技术参数

The main specifications parameters

项目Item	型号Model	6320ZCd	6320ZCd-2	6320ZCd-4	6320ZCd-6	8320ZCd-4	8320ZCd-6	8320ZCd-8
气缸数 No. of cylinders		6	6	6	6	8	8	8
气缸直径 Cylinder bore	mm	320						
活塞行程 Piston stroke	mm	440						
持续功率 MCR	kW/PS	971/1320	1103/1500	1324/1800	1545/2100	1765/2400	2060/2800	2206/3000
转速 Speed at MCR	r/min	400	428	500	525	500	525	525
平均有效压力 Mean effective pressure	MPa	1.372	1.457	1.495	1.662	1.495	1.662	1.782
最高燃烧压力 Max. combustion pressure	MPa	≤9.5	≤10.3	≤12.5	≤12.5	≤12.5	≤12.5	≤13.5
活塞平均速度 Mean piston speed	m/s	5.87	6.28	7.3	7.7	7.33	7.7	7.7
燃油消耗率 Specific fuel oil consumption g/kW.h								
at 85% MCR		196		192		196		186
at 100% MCR		198		194		198		189
机油消耗率 Specific lube oil consumption g/kW.h		1.2						
主要尺寸 Main Dimensions (L*B*H)	mm	4859x1613x3055	4859x1613x3055	4934x1818x3239	4934x1818x3239	6010x1818x3480	6010x1818x3480	6010x1853x3480
重量 Weight	kg	23000	23000	23000	23000	30000	30000	30000

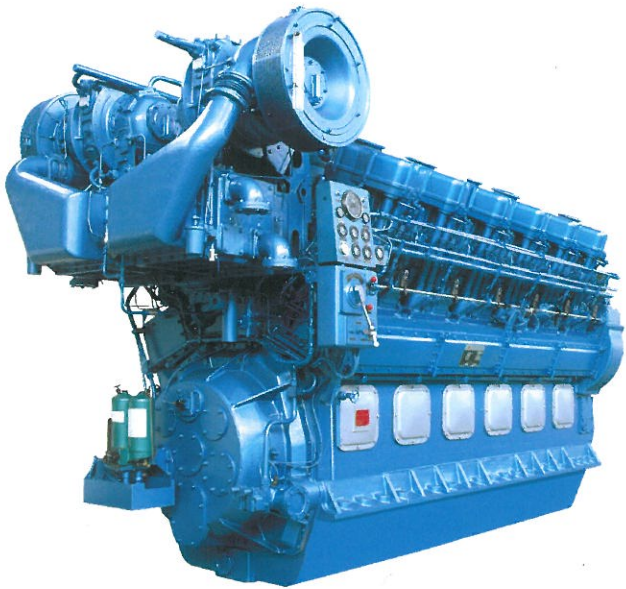
320系列柴油机外形尺寸

320 Series Diesel Engine Overall Dimensions



12V320 型船用柴油机

12V320 MARINE DIESEL ENGINES



- 采用我司12V320ZCd型船用柴油机作主动力力的8600t油轮"振洋9"
- "ZHENYANG No.9" Oil Tank With Model 12V320ZCd Marine Diesel Engine As Its Propelling Unit.

12V320 型柴油机性能特点
BRIEF INTRODUCTION TO SERIES 12V320 ENGINES
CHARACTERISTICS

12V320船用柴油机为四冲程、水冷、直接喷射、废气涡轮增压、中间空气冷却的中速柴油机。可燃用运动粘度180厘沱/50℃或雷氏1号粘度1500秒/100°F的重油。

The 12V320 marine diesel engine is a four-stroke, in line, water-cooled, direction injection, turbocharger, with a charging air cooler medium-speed marine diesel engine can be operated on heavy fuel oil of 180cSt/50℃ or 1500 sec.Red.No.1/100°F.

适宜选用12V320船用柴油机作主机船舶类型
12V320 engine used as the main engine of following ships

- 客滚船
- Ro-Ro vehicle ships
- 油船
- Oil tankers
- 集装箱船
- Container ships
- 散货船
- Bulk carriers
- 拖轮
- Tugboats
- 渔轮
- Fishing ships
- 疏浚工程船
- Dredgers
- 海军舰船
- Naval ships
- 多用途工作船
- AHTS



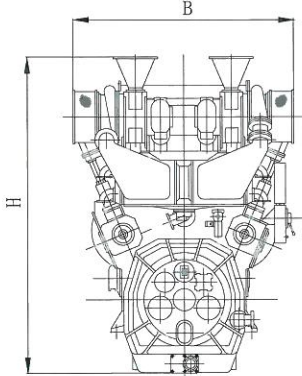
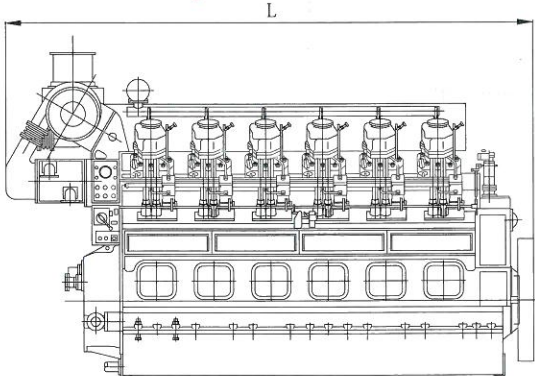
- 轮机机舱
- Engine Room

主要技术参数

The main specifications parameters

项目Item	型号Model	12V320ZCd
气缸数 No. of cylinders		12
气缸直径 Cylinder bore	mm	320
气缸排列方式 Cylinder arrangement		V
活塞行程 Piston stroke	mm	440
持续功率 MCR	kW/Ps	2426/3300
转速 Speed at MCR	r/min	450
平均有效压力 Mean effective pressure	MPa	1.523
最高燃烧压力 Max. combustion pressure	MPa	12
活塞平均速度 Mean piston speed	m/s	6.6
燃油消耗率 Specific fuel oil consumption	g/kW.h	
at 85% MCR		192
at 100% MCR		194
机油消耗率 Specific lube oil consumption	g/kW.h	1.2
主要尺寸 Main Dimensions (L*B*H)	mm	5660x2470x3426
重量 Weight	kg	35000

12V320系列柴油机外形尺寸
12V320 Series Diesel Engine Overall Dimensions



G32型船用柴油机

G32 MARINE DIESEL ENGINES



- 琼州海峡"粤海铁3号"、"粤海铁4号"火车渡轮 每条船用二台8G32型柴油机做主机
- Qiongzhou Channel "YUEHAI RAILWAY No.3" Ferry And "YUEHAI RAILWAY No.4" Ferry- 8G32×2 Diesel Engine Respectively

G32型柴油机性能特点

BRIEF INTRODUCTION TO SERIES G320 ENGINES
CHARACTERISTICS

G32型船用柴油机是广州柴油机厂股份有限公司（原广州柴油机厂）近年开发的新产品，产品技术结构和性能指标处于国内领先地位，达到本世纪初国际同类产品的先进水平。

G32系列船用柴油机为四冲程、水冷、直接喷射、废气涡轮增压、中间空气冷却、不可逆转的柴油机。有6缸、8缸、9缸，功率2665-4400kW等规格，可燃用运动粘度380厘沱/50℃或雷氏1号粘度3500秒/100°F的重油。

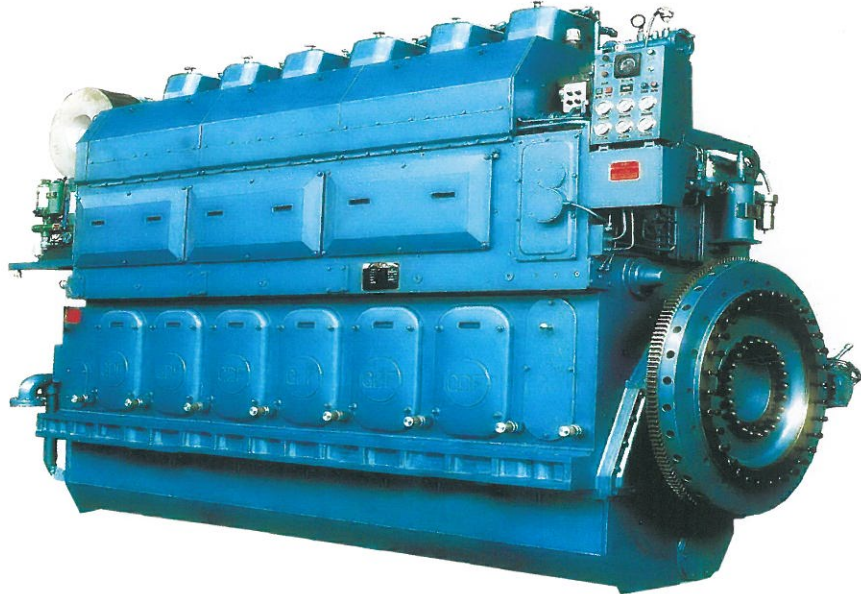
适宜选用G32船用柴油机作主机船舶类型

G32 engine used as the main engine of following ships

- 客滚船
- Ro-Ro vehicle ships
- 油船
- Oil tankers
- 集装箱船
- Container ships
- 散货船
- Bulk carriers
- 拖轮
- Tugboats
- 渔轮
- Fishing ships
- 疏浚工程船
- Dredgers
- 海军舰船
- Naval ships
- 多用途工作船
- AHTS



- "济海8005" 海洋工作船 用6G32A×2主机
- "JIHAI 8005" Ocean Engineering Ship-6G32A×2



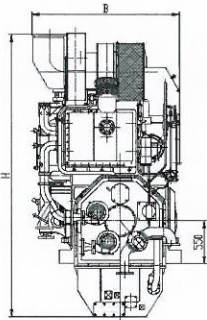
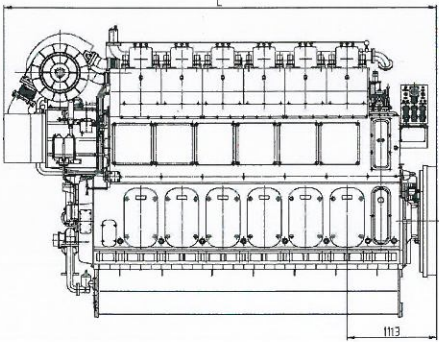
主要技术参数

The main specifications parameters

项目Item	型号Model	6G32	6G32A	8G32	8G32A	9G32
气缸数 No. of cylinders		6		8		9
气缸直径 Cylinder bore	mm	320				
气缸排列方式 Cylinder arrangement		直列In-line				
活塞行程 Piston stroke	mm	480				
持续功率 MCR	kW/Ps	2665/3600	2930/4000	3552/4800	3906/5310	4400/6000
转速 Speed at MCR	r/min	600				
平均有效压力 Mean effective pressure	MPa	2.30	2.53	2.30	2.53	2.53
最高燃烧压力 Max. combustion pressure	MPa	≤19				
活塞平均速度 Mean Piston speed	m/s	9.6				
燃油消耗率 Specific fuel oil consumption	g/kW.h					
at 85% MCR		183				
at 100% MCR		185				
机油消耗率 Specific lube oil consumption	g/kW.h	≤0.8				
主要尺寸 Main Dimensions (L*B*H)	mm	5580x1924x3640	5580x1924x3640	6727x1904x3605	6727x1904x3605	7257x1910x3930
重量 Weight	kg	36500	36500	46000	46000	54000

G32系列柴油机外形尺寸

G32 Series Diesel Engine Overall Dimensions



KU30A 型船用柴油机
KU30A MARINE DIESEL ENGINES



总公司
108-8215 日本东京都港区港南2-16-5
电话: 81-3-6716-3383
传真: 81-3-6716-5778

Head Office
16-5 Konan 2-chome, Minato-ku, Tokyo 108-8215, Japan
Tel: 81-3-6716-3383
Fax: 81-3-6716-5778

横滨制作所
236-8515 日本横滨市金沢区幸浦1-8-1
电话: 81-45-775-1202
传真: 81-45-775-0606

Yokohama Dockyard & Machinery Works
8-1 Sachiura 1-chome, Kanazawa-ku, Yokohama, Japan
Tel: 81-45-775-1202
Fax: 81-45-775-0606

广州柴油机厂股份有限公司是三菱重工
KU30A型柴油机在中国的生产、销售合作
伙伴。

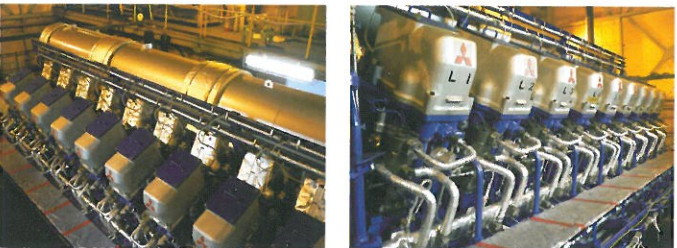
GDF signed partnership with MHI in
manufacturing and selling for KU30A
diesel engines in China.

自1917年开始, 三菱重工就致力于柴油机的制造和研发。各种
柴油机能够满足客户的一般用途和特殊用途。三菱重工先进的
研发和生产技术在日本和国外都得到了高度评价。

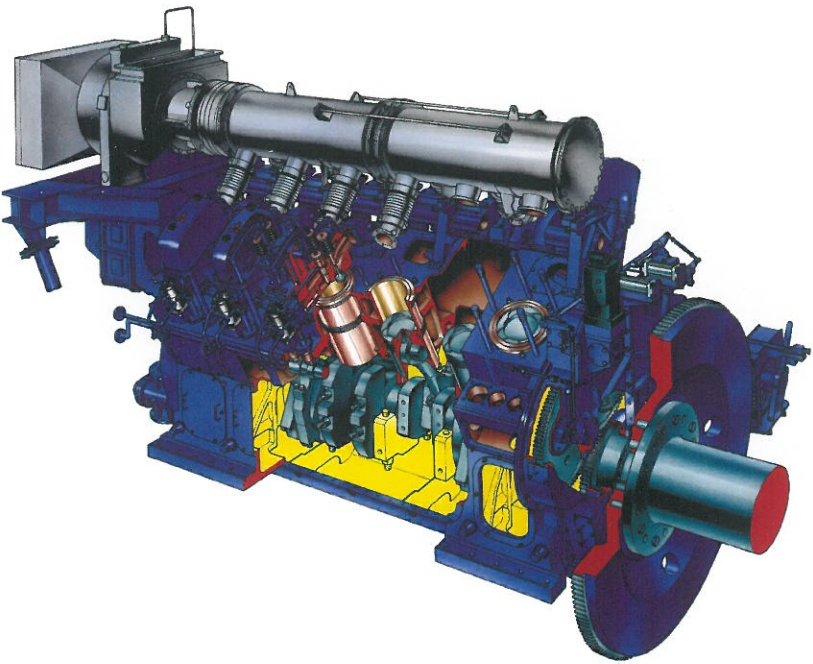
三菱四冲程中速柴油机特点: 运行稳定性和可靠性高, 储备
功率充足; 低油耗、低排放; 维护方便、运行成本低。

Since 1917, MITSUBISHI HEAVY INDUSTRIES, LTD (MHI) has been manufacturing
and designing Diesel Engines. Diesel engines from MHI can meet the users' common
and special requirements. MHI's advanced technology in designing and
manufacturing has earned high reputation in Japan and overseas.

The features of medium speed diesel engines with four-stroke: stable operation
and high reliability, sufficient margin power, low fuel consumption, low emission,
low running cost and easy to maintain etc.



- 可靠性高 High Reliability
- 经济性好 Good Economy
- 油耗低 Low Fuel Consumption
- 可燃380cSt/50℃重油 Can be operated on HFO with 380cSt/50℃



主要技术参数
The main specifications parameters

Table with 6 columns: Item, Type, and four model specifications (12KU30A, 14KU30A, 16KU30A, 18KU30A). Rows include cylinder count, bore, stroke, power, speed, pressure, and fuel consumption.

* 燃油消耗率基准条件按产品技术文件
The basic condition for SFOC refers to the technical document of product

KU30A系列柴油机外形尺寸
KU30A Series Diesel Engine Overall Dimensions

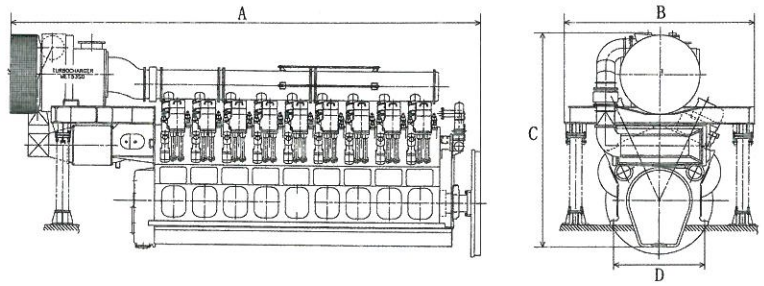
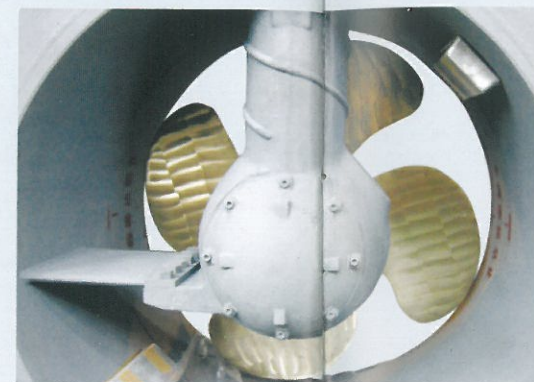


Table with 5 columns: Model, A, B, C, D. Rows list dimensions for models 12KU30A, 14KU30A, 16KU30A, and 18KU30A.

主推进动力装置

MAIN PROPULSION POWER UNIT

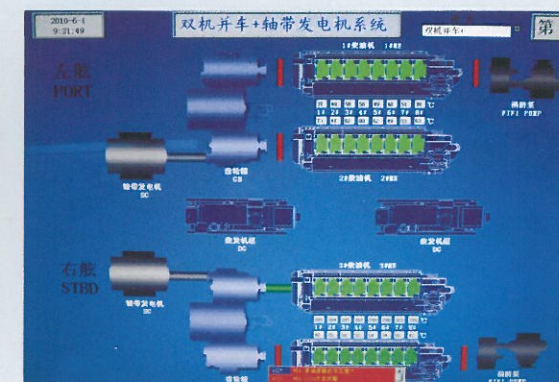
GDF



• 侧推螺旋桨
• Side thrust propeller



• 主机遥控系统
• Remote Control System



• 动力系统监测屏
• Power system monitoring screen

- GDF为"海洋石油252"海洋环保工作船提供主推进动力装置
- GDF Supplying Main Propulsion Power Unit For "HAIYANG SHIYOU 252" Ocean Environment Protection Engineering Ship

主推进动力装置

MAIN PROPULSION POWER UNIT

广州柴油机厂股份有限公司（原广州柴油机厂）一直以来致力于船用中速柴油机的设计、制造，具备批量供应660kW~6000kW（900Ps~8200Ps）的船用中速柴油机的能力。

我公司不但能向客户供应船用中速柴油机，而且还致力于向客户提供全套动力系统总成的解决方案，为各种海上船舶和海面作业提供船舶机械推进及操纵系统。我们通过与生产厂家、设计院的密切合作，并基于丰富的实践经验，已从单一的柴油机生产商发展到提供主推进动力装置的供应商，具备为客户提供全套动力系统总成解决方案的能力。在向用户供应全套动力系统的同时，在整个船舶建造过程中，我司还为客户提供质量控制，进度控制，安装调试和维修保养的全部服务。

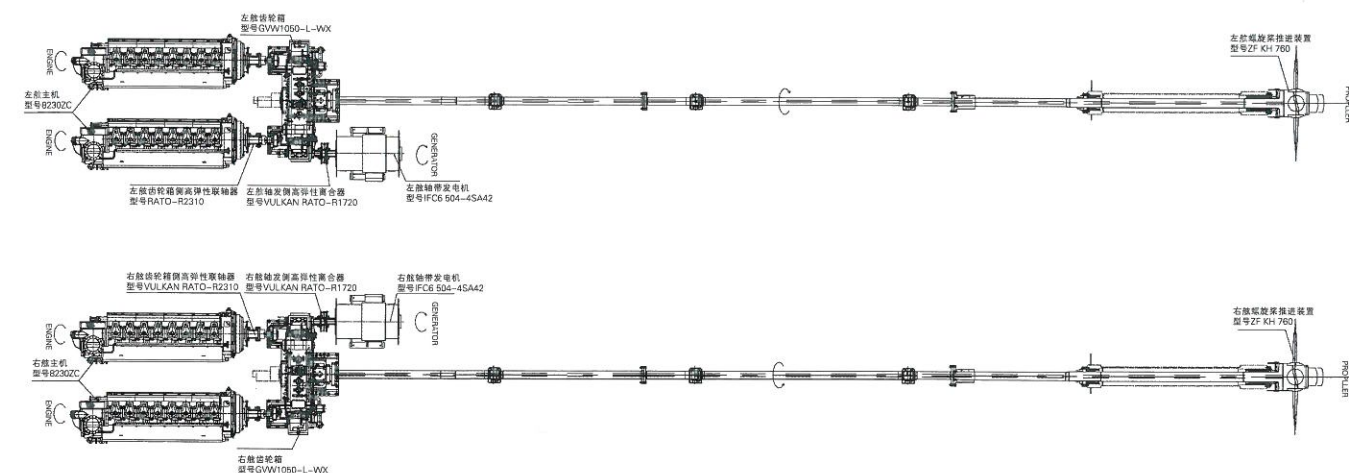
Guangzhou Diesel Engine Factory Co.,Ltd (Formerly known as Guangzhou Diesel Engine Factory) has devoted itself to designing and manufacturing the marine medium-speed diesel engines for the long time past with the capacity of batch supply of 660kW~6000kW (900Ps~8200Ps) marine medium-speed diesel engines. Our company not only supplies marine medium-speed diesel engines, but also devotes to supplying the solution of the complete set of propulsion power system to the customers, Which the propulsion system and the remote control system

主推进动力装置方案

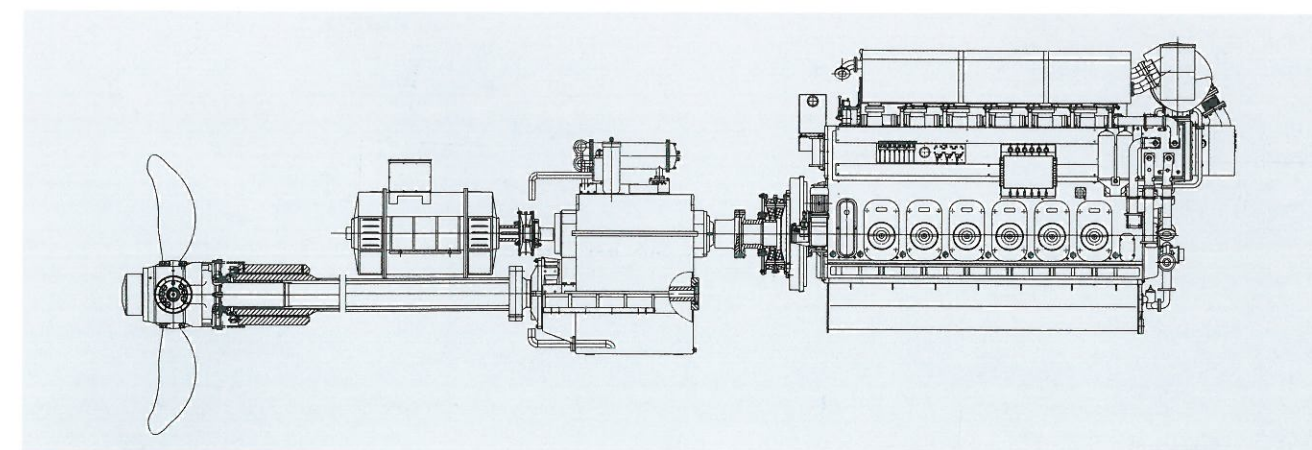
MAIN PROPULSION POWER UNIT PLAN

- 柴油机 Diesel Engine
- 弹性联轴器 Elastic Coupling
- 齿轮箱 Gearbox
- 定距桨 Fixed pitch propeller
- 可调距螺旋桨 Controllable pitch propeller
- 遥控系统 Remote control system
- 中间轴 Intermediate shaft
- 艉轴 Tail shaft
- 轴带发电机 Shaft generator
- 艏艉侧推 Bow and tail side thrust unit
- 联合操作系统 Combined operation system

for the open sea ship and offshore operation are supplied to customers. This kind of supply is based on the professional technology which has been tested practically. We has developed to be a supplier of main propulsion power unit from a single manufacturer of diesel engines with the technical plan design capacity of the complete set of propulsion power system with the support of parts manufacturers, designing institutes and the customers. We supply the complete set of propulsion power system, at the same time, we also supply the complete services such as quality control, schedule control, commissioning and maintenance throughout the building process.



- "海洋石油252" 海洋工作船推进动力装置(四机双桨)
- Main Propulsion Power Unit- "HAIYANG SHIYOU252" Ocean Engineering Ship



- "济海8005" 海洋工作船主推进装置案例(6G32A型柴油机)
- "JI HAI 8005" Shipping Instance of Main Propulsion Power Unit For Ocean Engineering Ship(6G32A Diesel Engine)

重油外围系统主要设备

HFO PERIPHERAL SYSTEM



供油单元性能特点
PERFORMANCE CHARACTERISTICS FOR
HFO SUPPLY UNIT

供油单元是广州柴油机厂股份有限公司选用Alfa Laval公司的粘温控制系统(MkII)和板式加热器(CBM26)等组装而成,是保证重油进入柴油机的压力、粘度和温度的重要设备。单元可在重油和柴油间灵活切换。当常用泵组出现故障时,备用泵组可自动投入运行。该单元具有使用方便、可靠、结构紧凑等优点。可提供供油单元CCS产品证书。

The HFO supply unit made by GDF with the Viscosity-Temperature Control System (MkII) from Alfa Laval and final heater (CBM26) is the crucial equipment to ensure the right. The unit can be switched between DO and HFO flexibly and the standby pump unit can be put into operation automatically when something happens to the normal pump unit. The unit has many features such as easy operation, reliable performance and compact construction, etc., and the CCS certificate of fuel supply unit can be provided.

主要技术参数
The main specifications parameters

项目Item	型号Model	HFOE.04C.00	HFOE.03C.00
Alfa Laval粘温控制系统 Alfa Laval viscosity-temperature control system		Mk II	Mk II
供油量 Oil supply capacity	m³/h	3	1.5
重油循环量 HFO circulation capacity	m³/h	6	3
柴油输出压力 DFO output pressure	MPa	0.2 ~ 0.3	0.2 ~ 0.3
重油输出压力 HFO output pressure	MPa	0.4 ~ 0.5(180cSt/50℃重油HFO) 0.45 ~ 0.55(380cSt/50℃重油HFO)	0.4 ~ 0.5(180cSt/50℃重油HFO) 0.45 ~ 0.55(380cSt/50℃重油HFO)
重油输出粘度 HFO output viscosity	cSt	12 ~ 14	12 ~ 14
加热介质 Heating media		蒸气或导热油 Steam or Heat conduction oil	蒸气或导热油 Steam or Heat conduction oil
加热介质需求量 Required steam capacity		按型号配置 According to model of HFO supply unit	按型号配置 According to model of HFO supply unit
长*宽*高 L*B*H	mm	2300x1400x2282	2300x1400x1760
重量 Weight	kg	1100	1065
适用油品 Applicable oil	cSt/50℃	180HFO、380HFO	180HFO、380HFO



分离机模块性能特点
PERFORMANCE CHARACTERISTICS FOR
HFO SEPARATING MODULE

分离机模块是广州柴油机厂股份有限公司选用Alfa Laval 公司的重油分离机、板式加热器 (CBM26-40) 和螺杆式供油泵等组装而成,是柴油机燃用重油时必不可少的设备。单元使用方便、可靠、减少现场大量的管路连接。

The HFO separating module made in GDF with the HFO separator from Alfa Laval, plate type heater(CBM26-40) and screw fuel oil supply pump is indispensable for HFO operation of the engine. This unit has many features of easy operation, reliable performance, and reduction of on-the spot pipeline connection, etc.

主要技术参数
The main specifications parameters

项目Item	型号Model	HFOE.01C.00A	HFOE.02C.00A
Alfa Laval分离机型号 Alfa Laval separator model		PA615	PA605
最大有效分离量 Max.capacity of effective separation L/h		2200	1600
适用油品 Applicable oil	cSt/50℃	180HFO	380HFO
分离温度 Separation temperature	℃	98	98
工作空气压力 Air operating pressure	MPa	0.5 ~ 0.7	0.5 ~ 0.7
工作水压力 Water operating pressure	MPa	0.2 ~ 0.6	0.2 ~ 0.6
加热介质 Heating media		蒸气(Steam)或导热油(Heat conduction oil)	蒸气(Steam)或导热油(Heat conduction oil)
加热介质需求量 Required steam capacity		蒸气(Steam)110kg/h或导热油(Heat conduction oil)3m³/h	蒸气(Steam)60kg/h或导热油(Heat conduction oil)1.5m³/h
长*宽*高 L*B*H	mm	1100x1100x1260	1100x1100x1260
重量 Weight	kg	1000	1000

创新世纪动力

Power for new century

■ 广州柴油机厂股份有限公司 (原广州柴油机厂)

GUANGZHOU DIESEL ENGINE FACTORY CO., LTD (FORMERLY KNOWN AS GUANGZHOU DIESEL ENGINE FACTORY)

地址: 广州市芳村大道东73号 PC: 510371 网址: www.gdf diesel.com.cn

Address: No. 73, East, Fangcun Road, Guangzhou, China.

电话(Tel): 0086-20-81891619 传真(Fax): 0086-20-81892297

■ 销售机构: 广州协同和柴油机销售有限公司

SALES ORGANIZATION: GUANGZHOU XIETONGHE DIESEL ENGINE SALES CO., LTD.

地址: 广州市芳村大道东148号 PC: 510370 Email: gdefsd@21cn.com

Address: No. 148, East, Fangcun Road, Guangzhou, China.

电话(Tel): 0086-20-81585010/81585014 传真(Fax): 0086-20-81584154

上海办事处: 上海市徐汇区零陵路791弄上影广场三号楼504室 邮编: 200030

Shanghai Office: Room 504, Building 3, Shangying Square, NO. 791, Lingling Road, Xuhui District, Shanghai.

电话(Tel): 0086-21-63262672/34613971 传真(Fax): 0086-21-34613971

武汉办事处: 武汉市操场角6号汉华花园商住楼B座15楼4号

Wuhan Office: No. 4 Room, 15th Floor, B Block, Commerce & Residence Building,

Hanhua Garden, 6 Caochang Jiao, Hankou, Wuhan, China.

电话(Tel): 0086-27-83766435 传真(Fax): 0086-27-83766435

越南海防办事处:

Hai Phong Office: Number 38, Lot 6, Pham Phu Str, Hai Phong City, Vietnam.

电话(Tel): 0084-31-3533119 传真(Fax): 0084-31-3533119

■ 服务网点:

SERVICE NETWORKING

技术支持: 广州市芳村大道东73号

Technical Support: No. 73, East, Fangcun Road, Guangzhou.

电话(Tel): 0086-20-81689720 传真(Fax): 0086-20-81689720

工程部: 广州市芳村大道东73号

After-sales Department: No. 73, East, Fangcun Road, Guangzhou.

电话(Tel): 0086-20-81573791 传真(Fax): 0086-20-81573791

配件销售: 广州市芳村大道东73号

Spare Parts Sale: No. 73, East, Fangcun Road, Guangzhou.

电话(Tel): 0086-20-81801008 传真(Fax): 0086-20-81596792

泉州服务中心: 福建省泉州市坪山路碧水湾2B-02号

Quanzhou Service Centre: No. 2B-02, Bishuiwan, Pingshan Road, Quanzhou City, China.

电话(Tel): 0086-595-22987366

宁波服务分部: 宁波市江东区中兴路197号

Ningbo Service Branch: No. 197, Zhongxing Road, Jiangdong District, Ningbo City, China.

电话(Tel): 0086-574-87773823 传真(Fax): 0086-574-87773823

大连特约维修服务: 大连市中山区上海路3号上影大厦2207室

Dalian Special Maintenance Service Centre: 2207 Room, Shangying Building,

No. 3 Shanghai Road, Zhongshan District, Dalian City.

电话(Tel): 0411-82800955 传真(Fax): 0411-82800958

南京办事处: 南京市雨花南路51-26号 (君悦城市花园)

Nanjing Office: No. 51-26, South, Yuhua Road, Nanjing City. (Junyue City Garden)

电话(Tel): 025-52489518 传真(Fax): 025-52489518

天津办事处: 天津市塘沽区新港三马路紫云国际小区9栋2-402

Tianjin Office: No. 2-402 Room, 9 Block, Ziyun International Garden,

No. 3 Xingang Road, Tanggu District, Tianjin City, China.



YOUR CONNECTION
TO THE RIGHT MACHINE

**XIN MING HUA PTE LTD
XMH ENGINEERING PTE LTD**

No. 44 Sungei Kadut Avenue
Singapore 729667

Tel : (65) 6368 0188

Fax : (65) 6368 0633

Email : sales@engine.com.sg

Website : www.xmh.com.sg



11840 Indonesia
ahoo.com